

Network Scanner **EN** Getting Started



251-1133-0V300

DE Erste Schritte
ES Procedimientos iniciales

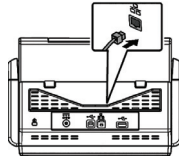
FR Démarrer
PT Começando

IT Guida introduttiva

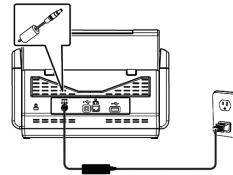
1 Connect the Network Cable and Turn on the Power

Netzwerkkabel anschließen und einschalten
Connecter le câble réseau et mettre sous tension
Collegare il cavo di rete e accendere
Conecte el cable de red y encienda la alimentación Conecte o cabo de rede e ligue

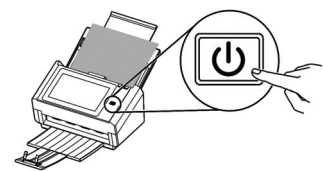
1.1



1.2



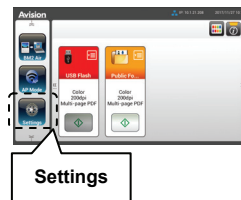
1.3



2 Select Language

Sprache wählen/Sélectionner la langue/Selezionare la lingua/Seleccionar idioma/Seleccione o Idioma

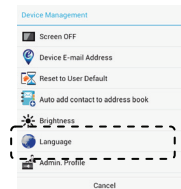
2.1



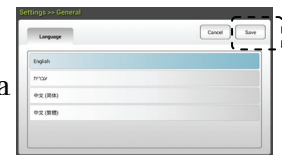
2.2



2.3



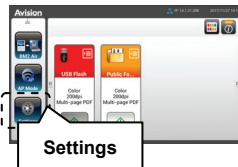
2.4



3 Set Date and Time

Datum und Zeit einstellen
Régler la date et l'heure
Impostazione di data e ora
Establecer fecha y hora
Definir Data e Hora

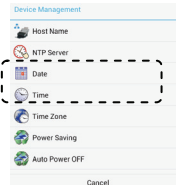
3.1



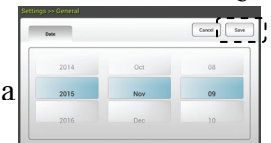
3.2



3.3



3.4



4 Set IP Address

IP-Adresse einstellen
Définir l'adresse IP
Impostare l'indirizzo IP
Establecer la dirección
Defina o Endereço de IP

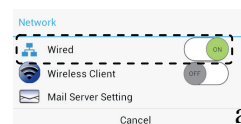
3.1



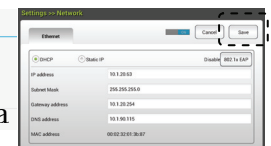
4.2



4.3



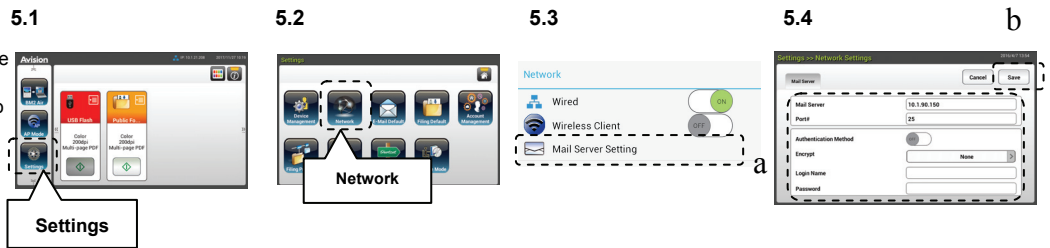
4.4



Network Scanner

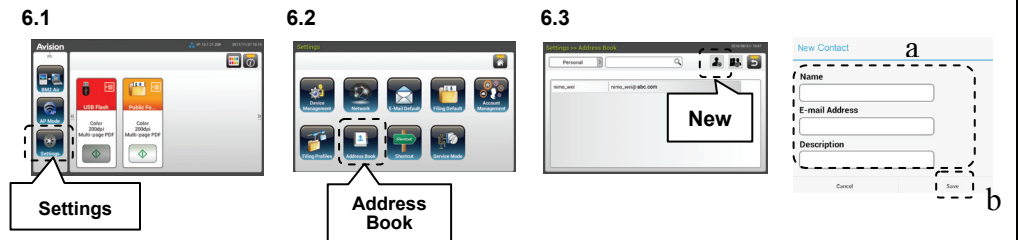
5 Set Mail Server

Mail-Server einstellen
 Définir le serveur de messagerie
 Impostare il server di posta
 Establecer el servidor de correo
 Defina o Servidor de E-mail



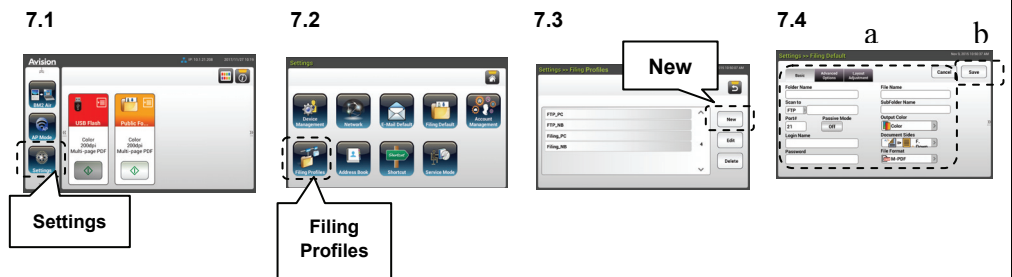
6 Create Address Book

Ihr Adressbuch erstellen
 Créer votre carnet d'adresses
 Creare la rubrica
 Cree la libreta de direcciones
 Crie sua Agenda de Contatos



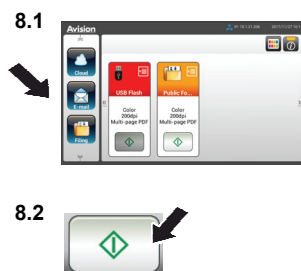
7 Create Filing Profiles

Archivierungsprofile erstellen
 Créer des profils de dépôt
 Creazione di profili di archiviazione
 Crear perfiles de archivado
 Criando Perfis de Barra



8 Send Your Document

Ihr Dokument versenden
 Envoyer votre document
 Inviare i documenti
 Enviar su documento
 Enviando seu Documento



View User's Manual

Weitere Informationen finden Sie auf der Anleitung auf der CD.
 Pour plus d'informations, référez-vous au manuel sur le CD.
 Fare riferimento al manuale contenuto nel CD per altre informazioni
 Para obtener más información, consulte el manual que se encuentra en el CD.
 Para mais informações, consulte o manual no CD.
 For more information, refer to the manual in the CD.