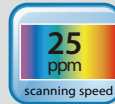


Scan to  
cloud servers



## Compact & Reliable



### Features:

- 9 pre-programmed "scan-to" destinations
- Professional bundled software applications include Avision Button Manager, Nuance PaperPort, AVScan and Avision Capture Tool
- AD125S scans 25 ppm (200 dpi, color)
- AD125S scans 20 ppm (300 dpi, color)
- Compact ADF holds up to 50 pages
- Press and scan to cloud servers including Google Docs, Microsoft SharePoint, or FTP via Button Manager V2

### A small and fast sheet-fed scanner ideal for front office document scanning

The Avision AD125S is a small, fast and color sheet-fed scanner designed for desktop use that scans single-sided documents at speeds up to 25 pages per minute. With its high performance and small footprint, the Avision AD125S is an ideal choice for your front office document scanning needs.



### Advanced imaging

Despite its compact size, the Avision AD125S is ready to scan full-color at a high speed of up to 25 ppm thanks to the advanced 50-sheet auto document feeder. Every AD125S model is equipped with a CCD sensor for high quality scans, and a 50-sheet capacity of the ADF for efficient batch scans.

### Easy to scan with a push of a button

With Avision's newly developed software application-Button Manager V2, the scanner allows you to complete your scan with a push of the Scan button and send the scanned image to a specified destination including e-mail, printer, image editing software application, or even a cloud server such as Google Drive or Microsoft SharePoint.



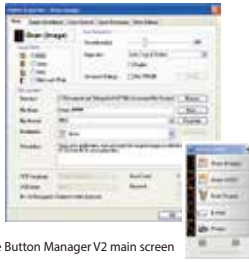
### What we have bundled

The Avision AD125S comes with TWAIN and ISIS drivers, and is bundled with a suite of powerful software applications that include Avision Button Manager V2, AVScan X and Nuance PaperPort SE 14. With Button Manager V2, you can scan and send images to e-mail, printer or other destinations with a simple press of the Scan button. The AVScan X and Nuance PaperPort are highly effective image processing and document management software that helps you streamline your task more efficiently.

# Avision | AD125S Sheetfed Scanner

## Avision's Button Manager V2

-Completes your scan with a single step



The Button Manager V2 main screen

## AVScan X

-The Intelligent Document Management Tool



The AVScan X main screen

## Nuance PaperPort SE14

- The Professional Choice to Organize and Share Your Documents



The PaperPort SE14 main screen

Button Manager V2 makes it easy for you to scan and send your image to your favorite destinations with a press one button. Now the new version comes with an innovative feature to let you scan and automatically upload the scanned document to popular cloud repositories such as Google Docs, Microsoft SharePoint or FTP. In addition, the iScan feature allows you to insert the scanned image or recognized text after optional OCR (Optical Character Recognition) process to your text editor such as Microsoft Word to get your job done easily and quickly.

Document Imaging is the very first step of Document Management. However, poor quality images can cause serious problems to later indexing or storing processes. It may increase scanning labor costs and lowers the OCR accuracy. AVScan X ensures all documents are checked and polished at the time they are scanned such that the image quality is guaranteed before they are ready to use for other purposes.

AVScan X is an intelligent scanning and electronic filing solution. AVScan X possesses distinct features that convert and index scanned information into electronic documents for easy storage and fast retrieval.

PaperPort SE 14 is Nuance's most popular scanning and document management solution, carefully designed specifically for home office use. Part traditional file cabinet, part digital-document desktop, PaperPort SE 14 is the fastest and easiest way to scan, share, search and organize your documents. Additionally, PaperPort SE 14 now delivers anytime-anywhere access to your most important files however it's convenient for you – using a PC, Mac, iPhone, iPad or Android device.



PAPERPORT SE 14



Avision Button Manager V2

AVScan X



### Avision AD125S Product Specifications

Paper Feeding:	ADF 50-page capacity
Scanning Technology:	Color Charged-Coupled Device ( CCD )
Document Size:	Min. 50 x 63.5 mm ( 2 x 2.5 in.) Max. 216 x 356 mm ( 8.5 x 14 in.)
Long Page Mode:	3000 mm (118 in.)
Scanning Speed:	25 PPM ( Color, A4, 200 dpi ) 20 PPM ( Color, A4, 300 dpi )
Paper Thickness:	34~127 g/m <sup>2</sup> ( 9~34 lb.)
Optical Resolution:	600 dpi
Output Resolution:	75, 100, 150, 200, 300, 400, 600 and 1200 dpi
Output Formats:	B/W, greyscale, 24-bit color
Bundled Software:	Avision Button Manager V2, Avision AVScan X, PaperPort SE 14
Interface/Drivers	USB 2.0 / TWAIN , ISIS (Compatible)
Power Supply:	Input: 100-240 VAC, 50/60 Hz Output: 24V, 1A
Power Consumption:	Operating: <11.8 W Ready: <7.3 W Sleep: <2.1 W
Environmental Factors:	Operating temperature: 10°C to 35°C ( 50°F to 95°F ) Operating humidity: 10% to 85%
Acoustic Noise:	Operating: <55 dB Ready: <45 dB
Dimensions ( W x D x H ):	Max. 308 x 446 x 329 mm (12.1 x 17.6 x 13 in.) Min. 308 x 172 x 271 mm (12.1 x 6.8 x 10.7 in.)
Weight:	2.4 kg (5.2 lb.)
Recommended Daily Scanning Volume:	4,000 sheets

We have endeavored to ensure that the information in this manual is accurate and that Avison is not responsible for printing or typographical errors. The above configuration is for reference only. The actual configuration (software, hardware) should be compiled with the specification described in the purchase agreement. Avison Inc. owns the intellectual property rights of the product outlook and design and the product outlook and design are subject to change. Avison reserves the right to the interpretation of the product description. Avison, Inc. All rights reserved. Other company and product names mentioned in this document are trademarks of their respective companies. Wheren the third party product is for reference only and Avison does not warrant these products nor is responsible for the efficiency or use of these products.

### System Requirements

CPU:	Intel® Core i3 (2.1GHz) or Higher
Memory:	1GB (32bit Windows) 2GB (64bit Windows)
DVD-ROM:	DVD ROM Drive
USB:	USB2.0 Port (USB3.0 Compatible)
Windows® Operating System:	Windows® 10, 8.x, 7, Vista, SP3, XP (32 & 64 bit)

### Contents

AD125S Scanner
Power Supply
Quick Guide
USB 2.0 Cable
CD-ROM includes:
-Scanner Driver (TWAIN/ISIS Driver)
-Avision Button Manager V2
-Avision AvScan X
-Nuance PaperPort SE 14



**Avision**  
www.avision.com