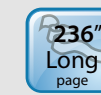


High Productivity, High Versatility



Features:

- Scans double-sided color documents up to legal size
- Fast scan rate up to 80 pages per minute and 160 images per minute at 300 dpi in color, gray or B&W mode
- Reverse roller technology delivers outstanding feeding reliability
- Ultrasonic multi-feed detection
- Earth-friendly LED technology
- Compact auto document feeder holds documents up to 100 pages
- Easy-to-use button scanning
- Supports 236 in. (600 cm) long page scanning
- Scan to clouds via Button Manager V2

A New Generation of Document Scanner

Enhanced with innovative features, the Avision AD280F offers high throughput of 80 ppm and 160 ipm in a compact footprint conserving both space and budget. Unlike common sheet-fed scanners which provide only the auto document feeder and can not accommodate irregular sizes and weights of paper, the AD280F harmoniously combines the benefits of the fast scan rate of the ADF and the convenience of the flatbed unit to meet customer's diverse requirements.

Support form document up to 242 x 356 mm (9.5 x 14 in.)

The AD280F boasts a unique and innovative design in comparison with its predecessors - the ability to accommodate form document up to 242 x 356 mm (9.5 x 14 in.). The extended document width from standard 216 mm (8.5 in.) to 242 mm (9.5 in.) makes the AD280F more competitive to fit for a wider range of documents.

Reverse Roller Enhances Feeding Reliability

Designed with the innovative reverse roller for advanced paper separation capability, the AD280F delivers outstanding feeding reliability and operating productivity by effectively reducing the risk of a multi-feed or paper jam.

Automatic multiple images cropping

In addition, the scanner comes with the convenient feature of multiple images cropping. With this feature, various sizes of documents such as photos, ID Cards, or business cards can be placed on the flatbed and the scanner is able to crop and create multiple images according to the original sizes of the documents in one single scan.

A Duplex Scanner Suited for Document and Cards

Thanks to the advanced straight paper path and image processing technology, mixed batches of documents with varies sizes and weights can be scanned, appropriately cropped, deskewed, and ready to use. Scan size accepts paper from receipts 50 x 50 mm (2 x 2 in.) to business document 242 x 356 mm (9.5 x 14 in.). The auto document feeder is also robust enough to feed paper up to 400 g/m2 (110 lb.) and embossed hard cards such as ID cards, credit cards, driver's license, and health insurance card up to 1.25 mm in thickness.

Paper Protection Technology

The advanced Paper protection technology protects valuable paper from being wrinkled or torn by halting the scan process once a skewed page is detected.

High-Volume Daily Duty Cycle

The scanner can be used to scan up to 11,000 pages per day through the 100-page automatic document feeder. The data indicates that this scanner is designed to scan document in any application requiring frequent document and hard card scanning.

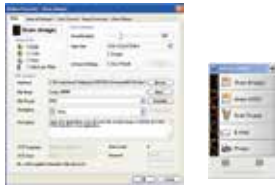
What we have bundled

The Avision AD280F scanner comes with TWAIN and ISIS drivers and are also bundled with full version of exclusive Avision AVScan X, Button Manager V2 and Nuance PaperPort SE 14 software application.

Avision | AD280F Document Scanner

Avision's Button Manager V2

-Completes your scan with a single step



The Button Manager V2 main screen

AVScan X

-The Intelligent Document Management Tool



The AVScan X main screen

Avision Network Box APP



Network Box APP main screen

Button Manager V2 makes it easy for you to scan and send your image to your favorite destinations with a press one button. Now the new version comes with an innovative feature to let you scan and automatically upload the scanned document to popular cloud repositories such as Google Docs, Microsoft SharePoint or FTP. In addition, the iScan feature allows you to insert the scanned image or recognized text after optional OCR (Optical Character Recognition) process to your text editor such as Microsoft Word to get your job done easily and quickly.

Document Imaging is the very first step of Document Management. However, poor quality images can cause serious problems to later indexing or storing processes. It may increase scanning labor costs and lowers the OCR accuracy. AvScan X ensures all documents are checked and polished at the time they are scanned such that the image quality is guaranteed before they are ready to use for other purposes.

AvScan X is an intelligent scanning and electronic filing solution. AvScan X possesses distinct features that convert and index scanned information into electronic documents for easy storage and fast retrieval.

By connecting the scanner to Avision's newly designed Network Box (optional), the scanner can be upgraded into a wired or wireless scanner to let other computers or smartphones/ tablets to scan and receive image data directly from the scanner in the LAN.

Avision Network Box Application (MB APP) To let your mobile devices instruct to scan and receive the scanned image, you need to install the mobile app – MB APP to your smart phones or tablets. The MB APP can be purchased for free from an application store such as Google Play, Apple APP store.

Simply press the [Start scan] button, the scanner begins scanning the document and the thumbnail image will be displayed.



PAPERPORT SE 14



Avision Button Manager V2

AVScan X



TWAIN



SMART image



Windows 10



ENERGY STAR



(Optional)

Avision AD280F Product Specifications

Paper Feeding:	ADF 100-page capacity with flatbed
Scanning Technology:	CCD
Light Source:	LED (LIGHT BAR)
Card Thickness:	Up to 1.25 mm
Long Page Mode:	6000 mm (236 in.)
Document size (ADF):	Min. 50 x 50 mm (2 x 2 in.) Max. 216 x 356 mm (8.5 x 14 in.) (Paper width up to 242 mm (9.5"))
Document Size (Flatbed):	Max. 216 x 356 mm (8.5 x 14 in.)
ADF Scanning Speed:	80 PPM/160 IPM (color, A4, 300 dpi)
Flatbed Scanning Speed:	1.5 sec. (color, A4, 300 dpi)
Paper Thickness:	27~413 g/m ² (7~110 lb.)
Optical Resolution:	600 dpi
Output Resolution:	75, 100, 150, 200, 300, 400, 600 and 1200 dpi
Output Formats:	B/W, greyscale, 24-bit color
File Formats:	BMP, PNG, GIF, JPEG, PDF, Searchable PDF Multi-Page TIFF, TIFF, RTF, TXT, XPS, DOC, XLS, PPT, DOCX, XLSX, PPTX, HTML.
Bundled Software:	Avision Button Manager V2, Avision AVScan X Nuance PaperPort SE 14
Interface/Drivers:	USB 3.1 Gen 1 / TWAIN, ISIS
Power Supply:	Input: 100~240 VAC, 50/60 Hz Output: 24V, 2A
Power Consumption:	Operating: 43 W Ready: 13 W Sleep: 1.7 W Off: 0.24 W
Environmental Factors:	Operating temperature: 10°C to 35°C (50°F to 95°F) Operating humidity: 10% to 85%
Acoustic Noise:	Standby: <45 dB Operating: <55 dB
Dimensions (W x D x H):	Max.: 809.4 x 323.2 x 330 mm (31.87 x 12.72 x 12.99 in.) Min.: 605.2 x 323.2 x 259 mm (23.83 x 12.72 x 10.2 in.)
Weight:	9.3 kg (20.4 lb.)
Recommended Daily Scanning Volume:	Up to 11,000 sheets
Multi-feed Detection:	Ultrasonic Sensor

We have endeavored to ensure that the information in this manual is accurate and that Avision is not responsible for printing or typographical errors. The above configuration is for reference only. Avision reserves the right to change the product without notice. Avision inc. owns the intellectual property rights of the product outlook and design and the product outlook and design are subject to change. Avision reserves the right to the interpretation of the product description. Avision, inc. All rights reserved. Other company and product names mentioned in this document are trademarks of their respective companies. Wherein the third party product is for reference only and Avision does not warrant these products nor is responsible for the efficiency or use of these products.

System Requirements

CPU:	Intel Core i3 (2.1GHz) or Higher
Memory:	2GB (32bit Windows) 4GB (64bit Windows)
DVD-ROM:	DVD ROM Drive
USB:	USB 3.1 Gen 1 port (USB 2.0 supported)
Windows Operating System:	Windows 10, 8.x, 7, Vista, SP3, XP (32 & 64 bit)

Contents

Scanner
Power Supply
Quick Guide
USB Cable
CD-ROM includes:
-Scanner Driver (TWAIN/ ISIS/ WIA Driver)
-Avision Manager V2
-Avision AVScan X
-Nuance PaperPort SE 14



Avision
www.avision.com

Specifications subject to change without notice.

Avision Inc. | No. 20, Creation Rd. I, Hsinchu Science Park 30077, Taiwan, R.O.C. | Tel: 886-3-5782388 | Fax: 886-3-5777017 | sales@avision.com.tw

Avision Europe GmbH | Siemensring 91 | 47877 Willich, Germany | Tel: +49-2154-88850-0 | Fax: +49-2154-88850-29 | w.kuo@avision-europe.com