

Thank you for purchasing the portable scanner. This scanner provides you flexibility to start instant scans without connecting it to a computer or you may start advanced scans by installing the software and connecting it to a computer.

## Start instant scans in "SD/Flash" mode

To start instant scan and store your images to your memory card or USB flash drive, please first switch the operation mode to "PC" at the rear of the scanner and follow the instructions in below to setup the scanner and start the battery charging.

### 1. Package contents



Scanner (with a rechargeable Li-Ion battery, NP120)



USB Y Cable



micro SD Card + adapter (including scanner driver/user's manual)



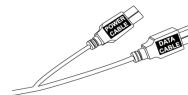
Power Adapter

#### Accessories:

- Quick guide(this document)
- Cleaning Swab
- Pouch
- CD (Bundled software)
- Calibration sheet

#### Note:

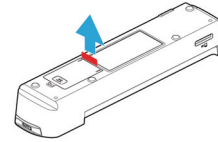
1. One end of the supplied USB Y cable includes two USB connectors (one labeled "Power Cable", the other labeled "Data Cable"). If only one USB port is available from your computer, please plug the connector labeled "Power Cable" to your computer while charging the battery and plug the connector labeled "Data Cable" to your computer while downloading the images. If there are two USB ports available, it is recommended to plug these two connectors to your computer.
2. Use only the supplied USB Y cable. Using this USB Y cable to other devices may cause unexpected damage.



## 2. Remove the tape from the battery compartment.

The battery comes pre-installed in the scanner's battery compartment. Simply turn the scanner over and remove the protective tape from the battery compartment.

**Warning:** Only use the battery model provided with the scanner (NP120 for 3.7V 1700mAh).



## 3. Charge the battery.

### Important:

- The battery must be fully charged before using the scanner for the first time. Allow the battery to charge for at least 6 hours.
- Do not turn on the scanner power when charging the battery.

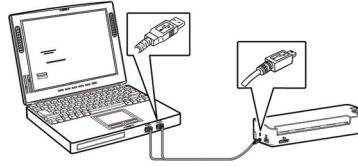
- 1). Turn off your scanner by moving the **POWER** knob to the "**OFF**" position.
- 2). The battery can be charged either through the supplied power adapter or through the computer via the USB cable.



- **Through the power adapter:** Plug the small end of the USB power cable to the mini USB port of the scanner. Plug the other end to an electric outlet.
- **Through the computer:** Insert the mini end of the USB cable to the mini USB port of the scanner. Turn on your computer, and then plug the other flat ends into two USB ports on your computer.

- 3). During the charging process, the battery LED light will be lit in orange. When the power capacity is full, the battery LED light will be lit in green.

To charge the battery next time, be sure to turn off the scanner first.



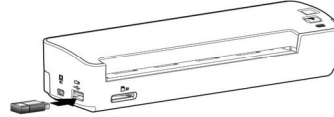
#### 4. Install memory card or a USB flash drive.

Insert the SD memory card with the copper strips face down in the SD slot of the scanner. Gently press in until the memory card is latched.



**Or**

If you have a USB flash drive, you can connect it to the USB port of the scanner instead of using a memory card.

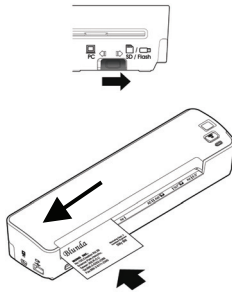


## 5. Turn on the scanner.

- 1). Move the **POWER** knob to any number between "1" and "5" to turn on the scanner.
- 2). The LED will be first blinking and then lit solidly in green. This indicates the scanner is in ready status.



## 6. Scan your document.



- 1). Turn the operation mode to "**SD/Flash**" at the rear of the scanner as indicated. By default, the scanner will be scanning in 300 dpi with the functions of auto crop and deskew (straighten).
- 2). To save your images in **JPEG** file format, turn the **POWER** knob to "1". To save images in **PDF** file format, turn the **POWER** knob to "2". To save your images in **TIFF** file format, turn the **POWER** knob to "3". Insert your document **FACE UP** into the feeding slot.
- 3). Align your document to the left edge of the feeding slot.
- 4). The scanner starts scanning the original when the paper has been fed into the feeding slot.
- 5). When scanning is finished, the image is saved in the memory card or your USB flash drive. (If JPEG/TIFF is selected, a folder and a subfolder "**DCIM\100Photo**" will be created. If PDF is selected, a folder and subfolder "**DCIM\100DOC**" will be created.)

---

**Note:** In "SD/Flash" mode, the default scan settings can be customized. Please refer to the user's manual in the supplied memory card for more details.

---

## Start advanced scans in "PC" mode

By first switching the operation mode to "PC" at the rear of the scanner, installing the scanner driver and then connecting the scanner to your computer with USB cable, the scanner allows you to start advanced scans from your computer like a regular scanner.

Please follow these steps to install the software and connecting the scanner to your computer.

### 1. Install the software.

- 1). Insert the supplied micro SD card into your card reader and then connect the card reader to your computer.

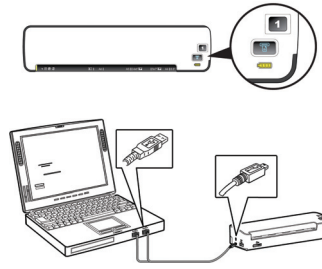
If a card reader is not available, you can switch the operation mode to "SD/Flash" temporarily and connect the scanner to your computer. The computer then is able to identify your scanner as a "**Removable Disk**" and read your files in the memory card.

- 2). Browse the memory card. You will find a folder "**START HERE**" is created. Double click the "**setup.exe**" file in the folder. The software installation graphic appears.
- 3). Click **Install Button Manager V2** to install the Button Manager software and then click **Install Scanner Driver** to install the scanner driver on your computer.



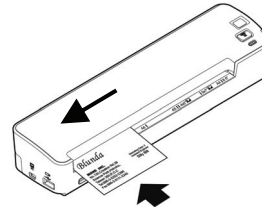
## 2. Connect the cable.

- 1). Make sure the operation mode at the rear of the scanner has been switched to "PC".
- 2). Move the **POWER** knob to any number between "1" and "5" to turn on the scanner.
- 3). Insert the mini USB connector to the mini USB port of the scanner.
- 4). Turn on your computer, and then plug the other flat ends into two USB ports on your computer.
- 5). The computer should detect a new USB device and prompt a "**New Hardware Found**" message.
- 6). Follow the on-screen instructions to complete the installation.



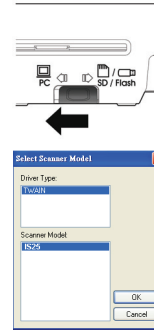
## 3. Load the paper.

- 1). Insert your document **FACE UP** into the feeding slot.
- 2). Align your document to the left side of the paper feed slot.

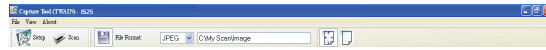


#### 4. Start a Scan.


- 1). Turn the operation mode to the "PC" mode at the back of the scanner as indicated.
- 2). Use provided Avison Capture Tool to start your scan. Select Start>Programs>Avison IS25 Scanner>Avison Capture Tool.
- 3). The Select Scanner Model dialog box will be displayed.

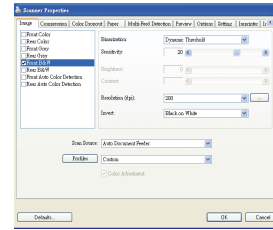


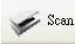
- 4). Select your driver type and scanner model and click **OK**. The Avison Capture Tool dialog box will be displayed.

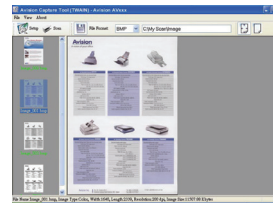


- 5). Choose your desired file format from the File Format drop down list box. (Default is BMP, other choice includes TIFF, MTIFF, GIF, PDF, MPDF, and JPEG.)

- 6). Click the **Setup** button (  ) to prompt the Scanner Properties dialog box.
- 7). From the **Image Selection** box, choose your desired image type for your scanned image. (Default is Front B&W)
- 8). Click **OK** to quit the Scanner Properties dialog box.



- 9). Click the **Scan** button (  ) to start a scan. The document will be scanned and displayed on the screen.



---

**Note:** For more details on using the **Scanner Properties** dialog box, please refer to the user's manual in the supplied memory card.

---