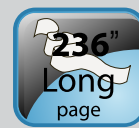
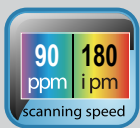


A3 duplex  
high performance  
scanner



**Features**

- Scanning speed up to 100 ppm / 200 ipm
- A3 scanning area 297 x 432 mm
- Scanning of long documents up to 600 cm
- Optical resolution up to 600 dpi
- Ultrasonic double feed detection
- Daily volume up to 25.000 pages
- Paper protection mechanism
- User-friendly TWAIN driver with numerous useful features for scan optimization like automatic color recognition, color correction, document cleanup, and much more
- Environmentally friendly LED technology

**A3 Duplex Scanner**

The Avison AD6090N-AEG is equipped with innovative functions and offers a high speed of 100 ppm and 200 ipm.

**No warm-up time and fast scans**

The LED light not only saves energy but also requires no warm-up time. The AD6090N-AEG is ready to use immediately after switching on.

**Software Bundle**

The Scanner ships with the TWAIN and WIA drivers as well as with a versatile scanning tool ButtonMagager V.2.

**Multi feed Detection**

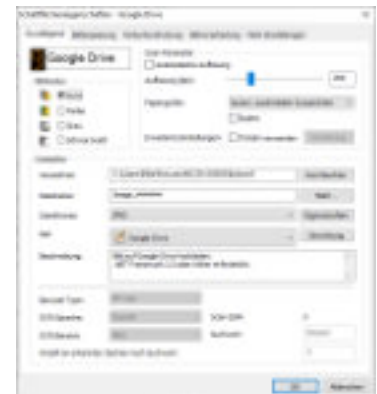
The built-in ultrasonic sensor warns of overlapping drawn-in pages and thus prevents incomplete document capture.

**High daily throughput volume**

With the 150 pages automatic document feeder (ADF) the recommended daily scanning volume reaches up to 20.000 pages.

**Professional TWAIN driver**

Avison's easy-to-use TWAIN driver offers many useful features to optimize image quality and productivity.



**Long Document Scanning**

The AD6090N offers the possibility to scan paper with a length of up to 600 cm.

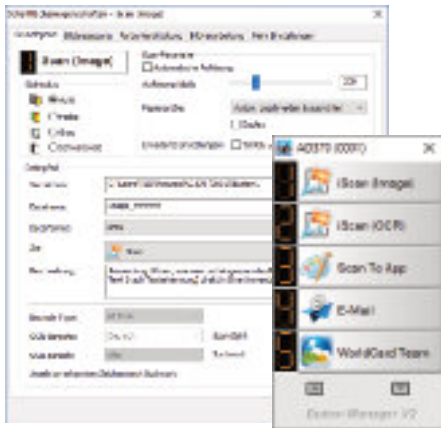


**Paper Protection Mechanism**

Three ultrasonic sensors reduce the risk of document damage and prevent paper jams during document feeding.

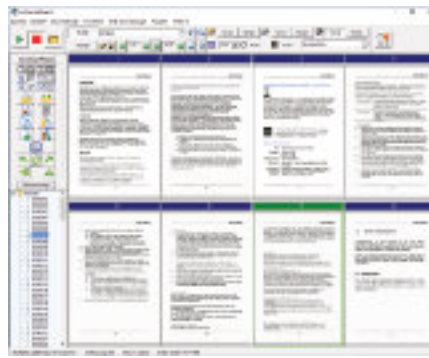
# Avision | AD6090N-AEG

## Avision's Button Manager V2 All scan with a single click



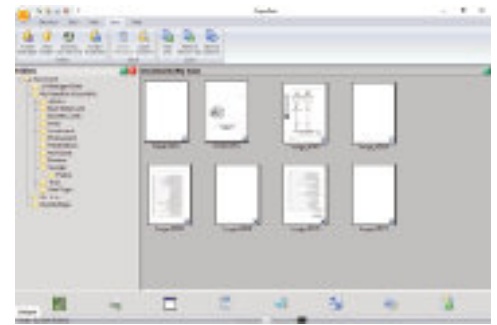
Button Manager V2 makes it easy for you to scan and send your images to your favorite destinations with the touch of a button. The current version has an innovative feature that allows you to automatically file the scanned document to the cloud. For example, Google Docs, Microsoft SharePoint and FTP are supported. Moreover, the iScan feature allows you to paste the scanned image or recognized text into your text editor like Microsoft Word after the optional OCR (Optical Character Recognition) process to get your work done easily and quickly.

## AvScan X The intelligent document management



Document mapping is the first step in document management. However, poor quality images can cause serious problems in later indexing or storing of processes. This can increase scanning labor costs and lower OCR accuracy. AVScan X ensures that all documents are checked and corrected at the time of scanning, so image quality is guaranteed before they can be used for other purposes. AVScan X is an intelligent scanning and electronic filing solution. It has features that index electronic documents for easy storage and quick retrieval.

## PaperPort SE14 Professional document organization



PaperPort is the easiest way to organize stacks of paper and images in an organized form that makes documents quick to find and easy to use. Stop wasting time searching for paper documents.

With PaperPort you can simply connect your Avision scanner to your computer and edit your PDF or JPEG documents as if you were editing paper documents on your desk. This is the perfect solution for your home office or small office.



## AD6090-AEG Product Specifications

Scanning speed	90 ppm / 180 ipm (color, A4, 300 dpi)
Scanning technology	CIS (Contact Image Sensor)
Light Source	LED
Color depth	48 Bits Input / 24 Bits Output
Optical Resolution	600 dpi
Document size ADF	Max. 308 x 432 mm; Min. 50 x 65 mm
Lang page scans	Bis 60,96 cm (200 dpi)
Dimensions	Max. 460 x 680 x 198 mm
Weight	12 kg
Paper feeding	150 pages ADF
Interface	USB 3.2 Gen 1x1
Output formats	BMP, PNG, GIF, JPEG, Single-Page PDF, Multi-Page PDF, Multi-TIFF, TIFF, RTF, TXT, OCR( for iScan only ), XPS, DOC, XLS, PPT, DOCS, XLSX, PPTX, HTML
Drivers	TWAIN, ISIS, WIA
Power consumption	Operation < 48W * Ready < 14W Sleep < 3,1W * Off < 0,2W
Noise	Standby < 25dB * Operation < 58dB
Paper thickness	27g ~ 105 g/m <sup>2</sup> (413g straight path)
Environmental factors	Operating temperature: 10°C-35°C   Relative humidity: 10% up to 85%
Recommended daily volume	Up to 25.000 pages

## System Requirements

CPU	Min. Intel i3 (2,1GHz)
Memory (RAM)	2GB (32bit Windows) 4GB (64bit Windows)
Interface	USB 3.2 Gen 1x1
Operating System	Windows 11/10/8/7
Contents	
Hardware	Scanner, USB Cable, Power Adapter
Software	Driver (TWAIN, ISIS, WIA) ButtonManager Avision AvScan X PaperPort SE

Specifications are subject to change without notice



**Avision**  
www.avision.com